

EZP2019+ programmer manual features

Product picture:



Field of application:

This programmer can read and write the bios chips of DVD,TV,PC,harddisk,etc.

Features:

1. USB 2.0 interface, the speed is 12Mbps.
2. The speed of reading and writing is fast.
3. Auto detect chip modles.
4. Auto select power vottage.
5. Surpport 25 FLASH, 24 EEPROM, 25 EEPROM, 93 EEPROM,etc.
6. Small shape.
7. Windows XP, Windows Vista, Win7,WIN8,WIN10.

List:

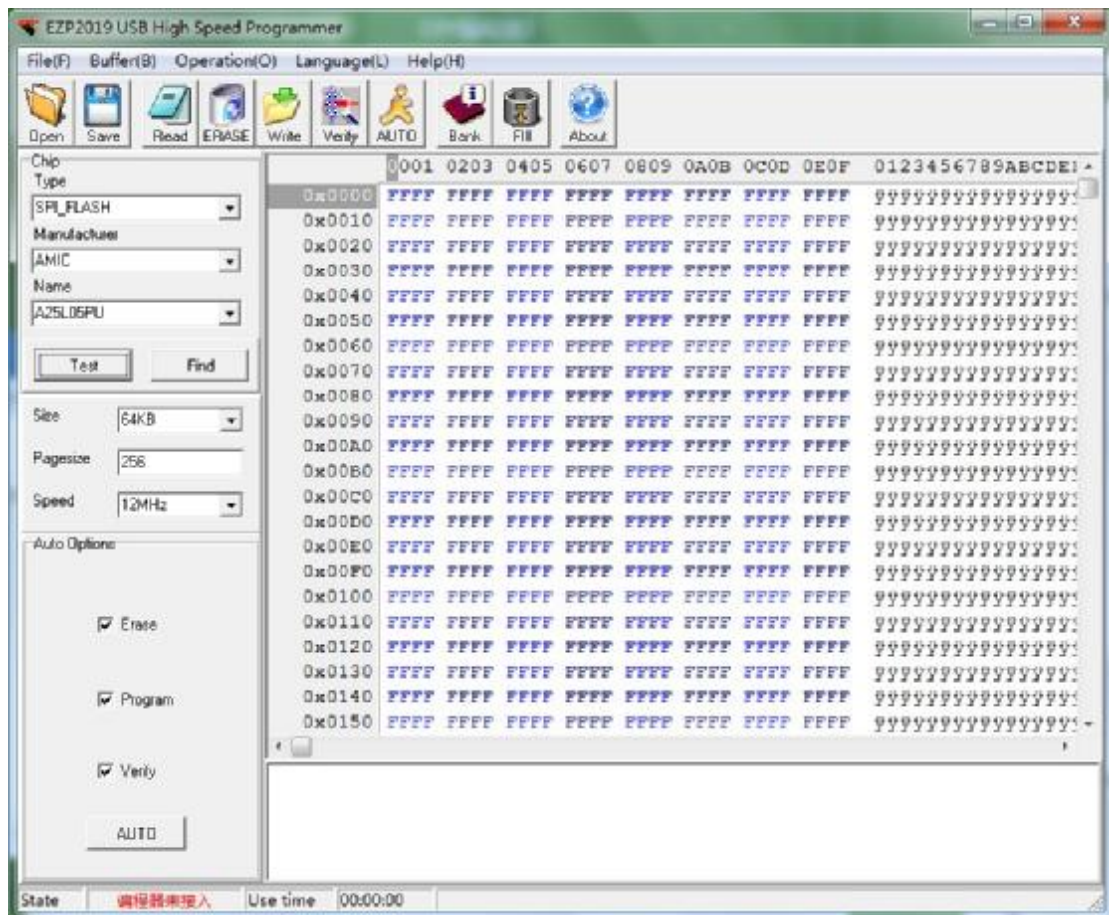
1. Programmer 1
2. Usb cable 1
3. CD 1
4. Manual(a file on CD) 1
5. Simple socket for SMD chips 2

**EZP2019+ programmer manual
driver setup**

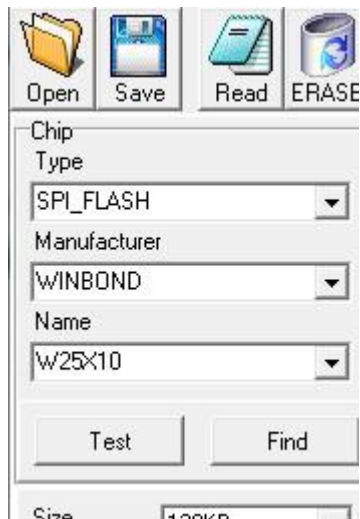
There are two usb device driver files: installer_x64.exe or install_x86.exe
Run the "*.exe"; The step of usb driver setup is same as other usb devices.

EZP2019+ programmer manual software setup

No need to install, please run the *.exe programm.



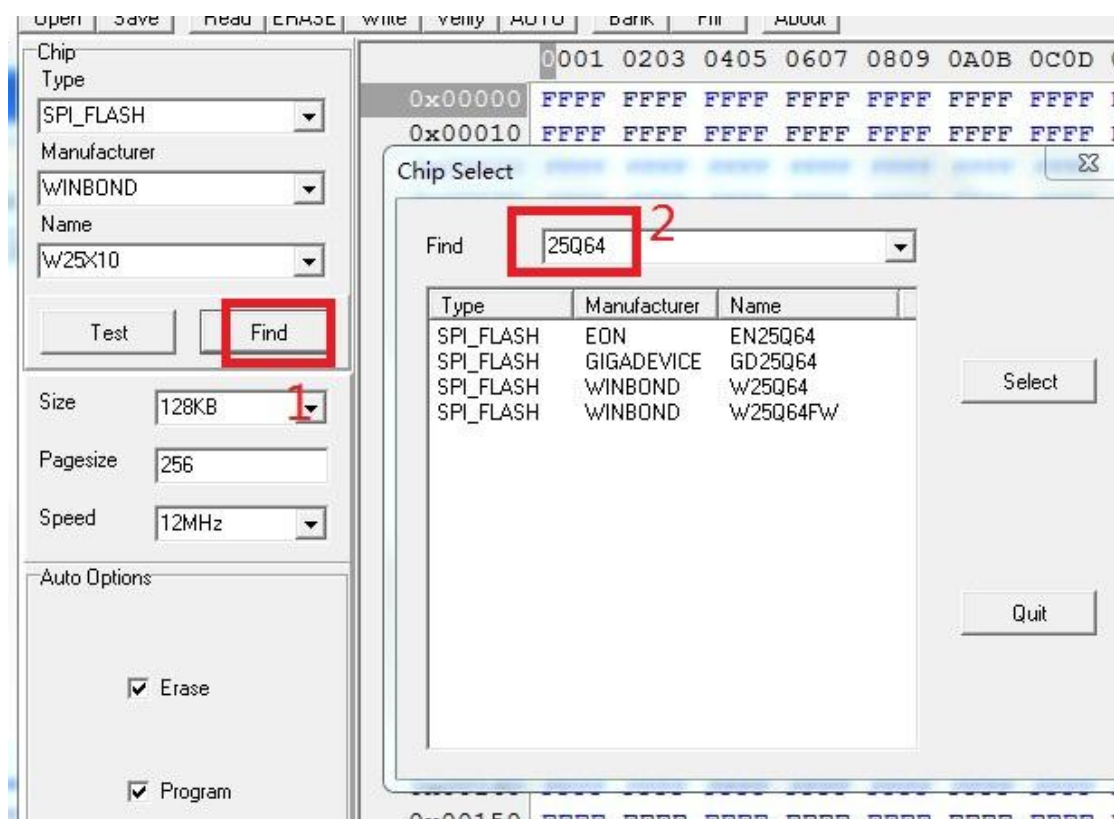
EZP2019+ programmer manual select chip



User can select chip mode from "Type", "Manu" and "Chip" combobox.

User can click "Search" to select chip mode too.

[EZP2019+ programmer manual search chip](#)



Click "find", then pop the above dialog, enter the keyword, the matched chips will be listed in the listbox.

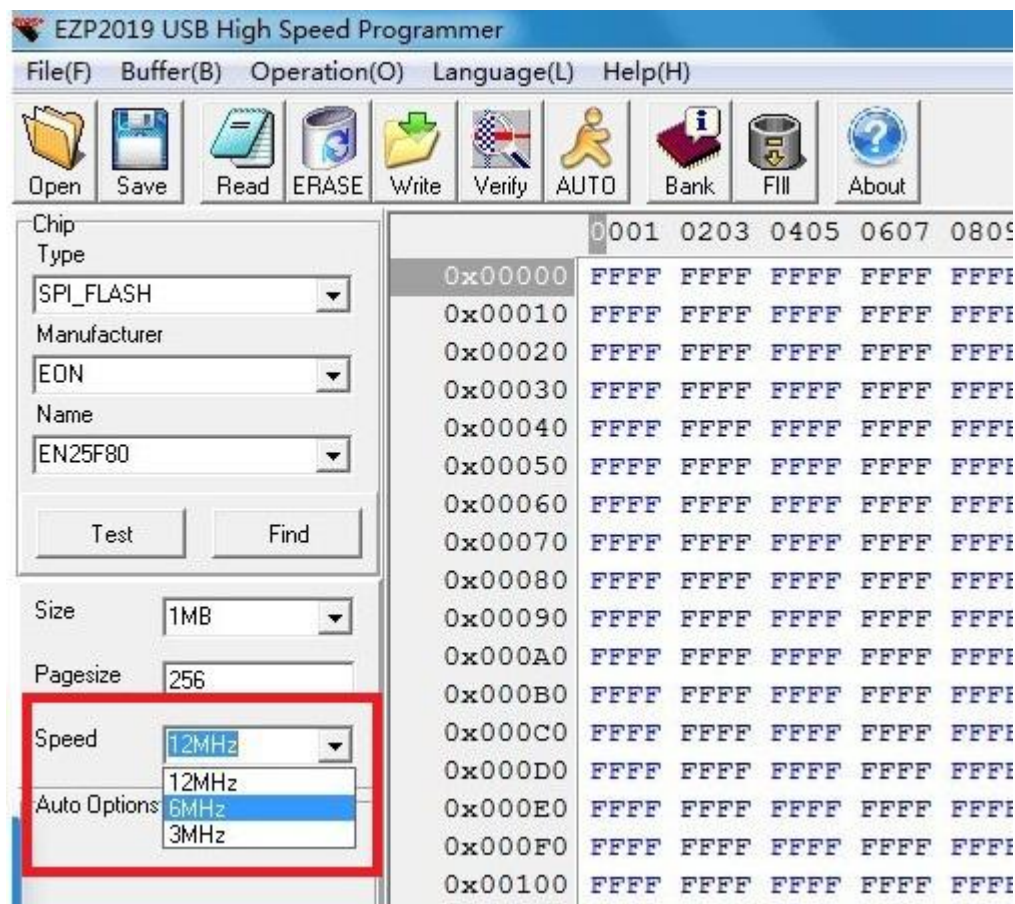
[EZP2019+ programmer manual detect chip](#)



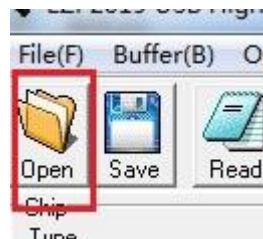
Click "Detect", the software will pop a message box to show chip name.

The programmer only can detect 25 series spi flash.

Note: Some 8M or more chips are detect ID unstable. recommended to select the chip manually. In addition, if some errors when reading and writing, please to lower the speed(see the picture below).



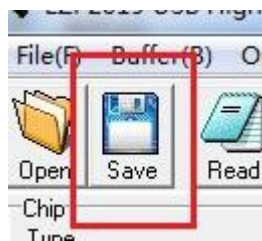
open file



Click "OPEN",

Load data to buffer from a bin file or a hex file.

[EZP2019+ programmer manual](#) save file



Save data to a bin file from buffer.

[EZP2019+ programmer manual](#) edit

0x00020	FFFF	FFFF	FFFF	FFFF	FFFF	FFFF	FFFF	FFF
0x00030	FFFF	FFFF	FFFF	FFFF	FFFF	FFFF	FFFF	FFF
0x00040	FFFF	FFFF	FFFF	FFFF	FFFF	FFFF	FFFF	FFF
0x00050	FFFF	FFFF	FFFF	FFFF	FFFF	FFFF	FFFF	FFF
0x00060	FFFF	FFFF	FFFF	FFFF	FFFF	FFFF	FFFF	FFF
0x00070	FFFF	FFFF	FFFF	FFFF	FFFF	FFFF	FFFF	FFF
0x00080	FFFF	FFFF	FFFF	FFFF	FFFF	FFFF	FFFF	FFF
0x00090	FFFF	FFFF	FFFF	FFFF	FFFF	FFFF	FFFF	FFF
0x000A0	FFFF	AACD	FFFF	FFFF	FFFF	FFFF	FFFF	FFF
0x000B0	FFFF	FFFF	FFFF	FFFF	FFFF	FFFF	FFFF	FFF
0x000C0	FFFF	FFFF	FFFF	FFFF	FFFF	FFFF	FFFF	FFF
0x000D0	FFFF	FFFF	FFFF	FFFF	FFFF	FFFF	FFFF	FFF
0x000E0	FFFF	FFFF	FFFF	FFFF	FFFF	FFFF	FFFF	FFF
0x000F0	FFFF	FFFF	FFFF	FFFF	FFFF	FFFF	FFFF	FFF
0x00100	FFFF	FFFF	FFFF	FFFF	FFFF	FFFF	FFFF	FFF

User can change data in buffer.

[EZP2019+ programmer manual](#) erase chip

One 25 flash must be erased before writing.

No need to erase one 24 eeprom before writing.

No need to erase one 93 eeprom before writting.

EZP2019+ rogrammer manual read chip

Read data to buffer from chip.

EZP2019+ rogrammer manual write chip

Write data to chip from buffer.

EZP2019+ rogrammer manual verify chip

Compare the data in chip to the data in buffer.

It's necessary to execute the verify command after writting.

EZP2019+ rogrammer manual auto

Erase, write and verify.

EZP2019+ ogrammer manual FAQ

1. Verify error.

- (1)User must select a correct chip modle before writting.
- (2)User must erase chip before writting if che chip is a 25 flash.
- (3)User must select a correct memory unit width if che chip is a 93 eeprom.
- (4)The chip maybe bad.

2. Chip position when reading and writting.

- (1)If the programmer is linked to PC, the chip must be placed in the socket as below:

3. Automatically detect chip modle unsuccessful.

See the section "detect chip" in this document.

4. The simple SMD socket.

