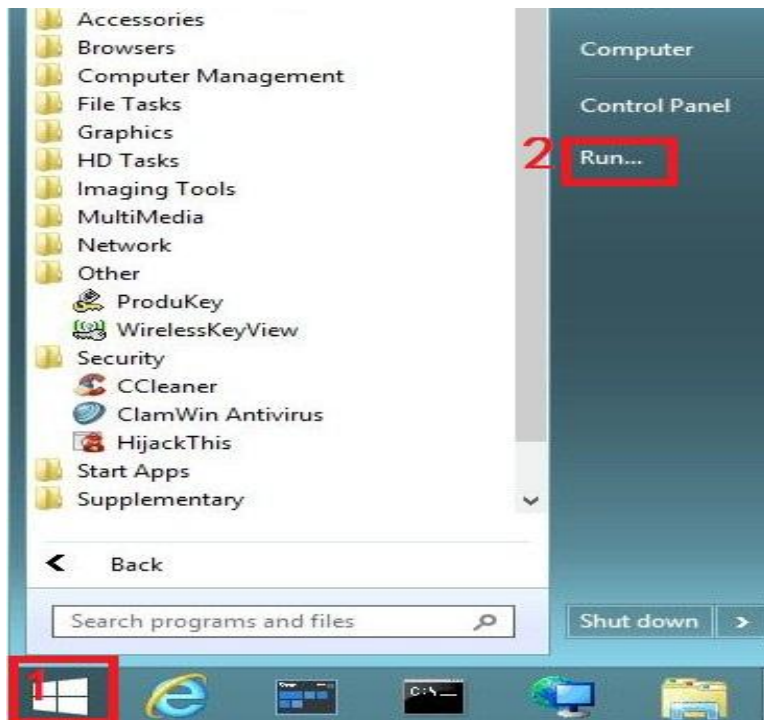
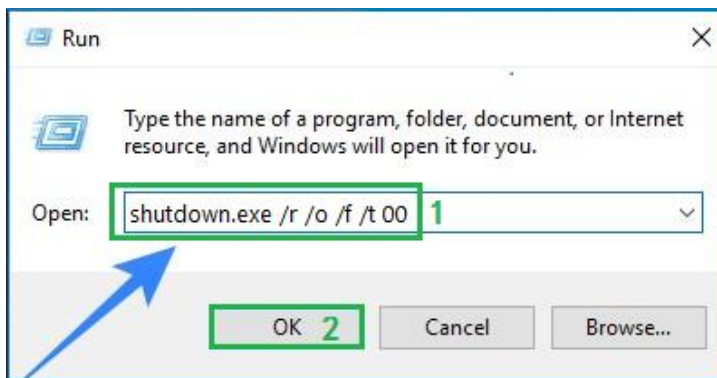


Windows8 and Windows 10

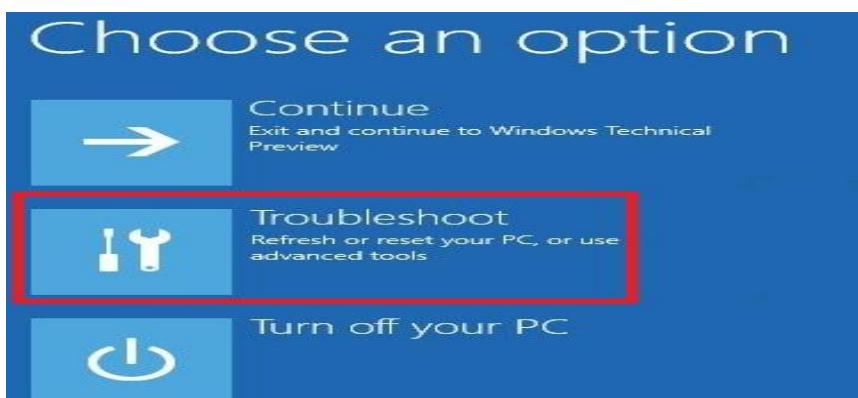
1. Right click on “Start” and choose “Run”



2. Write “shutdown.exe /r /o /f /t 00” (Note the space bar).
(without inverted commas) and press “OK” [2]



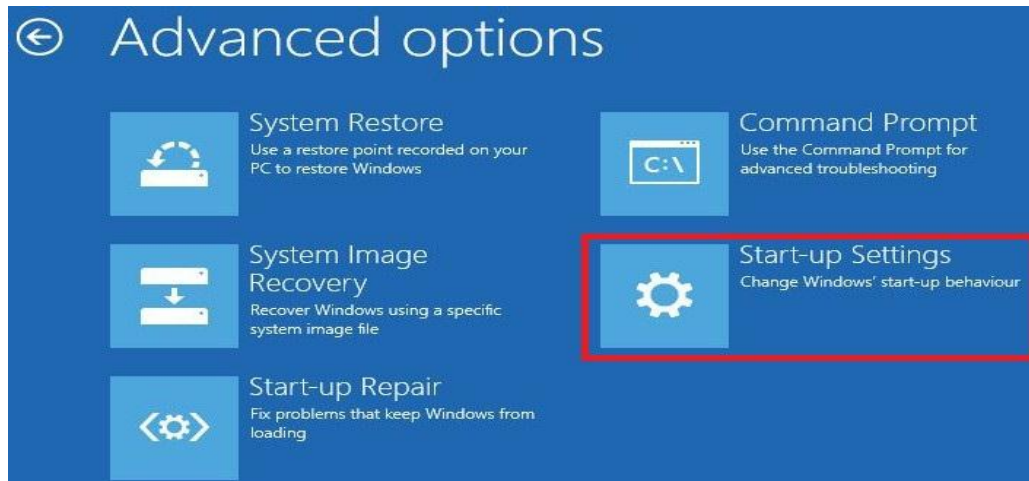
3. Wait for System restart. Press “Troubleshoot” on the next screen.



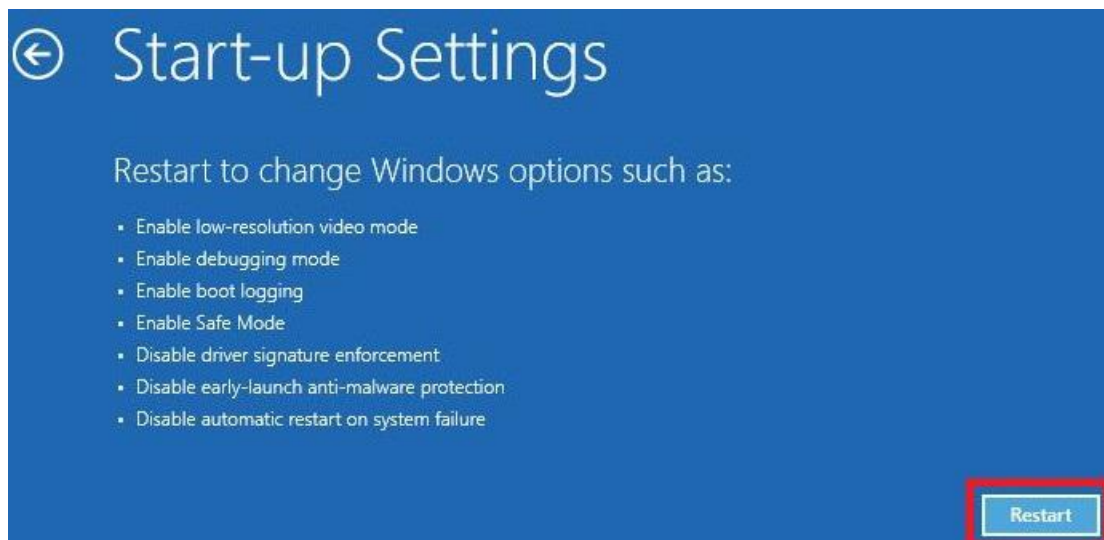
4. Press “**Advanced Options**” on the next screen.



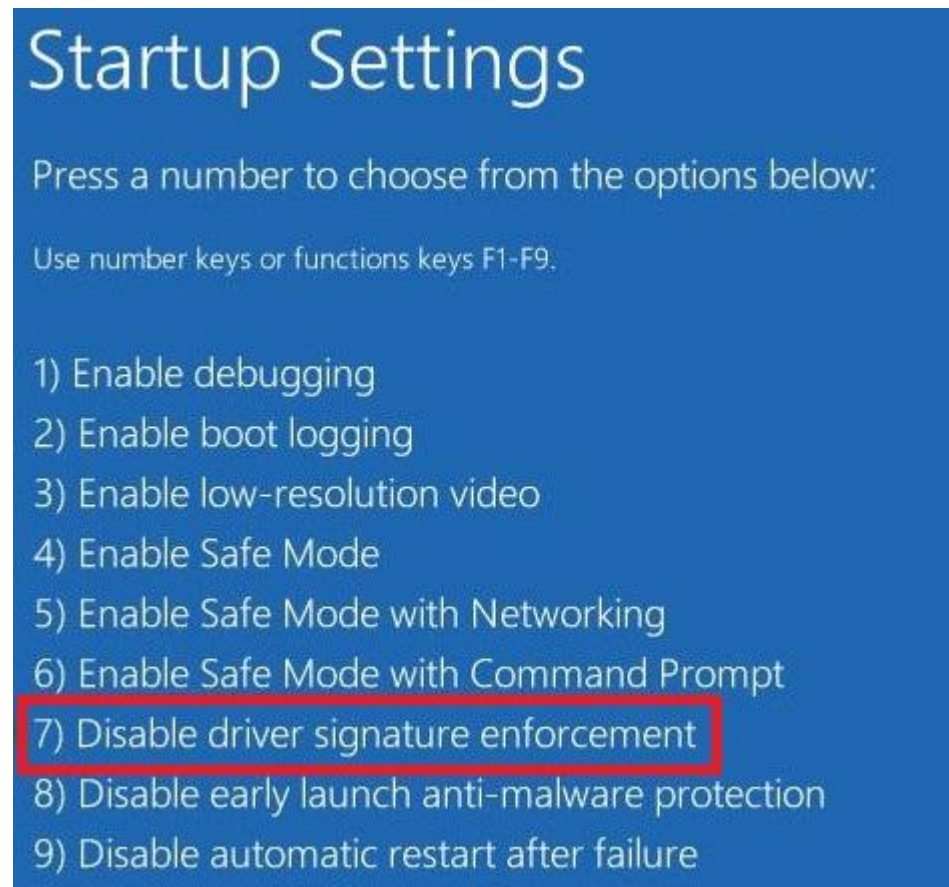
5. Press “**Start-up Settings**” on the next screen.



6. Press “**Restart**” on the next screen.



7. Wait for System restart. Press F7 key to “Disable Driver Signature Enforcement”.



8. Wait for the complete System restart.

Then follow the above “Install 1” to complete driver installation.